



# INDOFINE Chemical Company, Inc.

121 Stryker Lane, Bldg. 30, Suite 1 • Hillsborough, NJ 08844 • U.S.A.

Phone: (908) 359-6778 • FAX: (908) 359-1179

website: [www.indofinechemical.com](http://www.indofinechemical.com)

e-mail: [chemical@indofinechemical.com](mailto:chemical@indofinechemical.com)

## CERTIFICATE OF ANALYSIS

Catalog Number: 19-219

Product Name: **3(4'-BROMOPHENYL)-4,7-DIMETHYLCOUMARIN**

Lot Number: 99277

Chemical Formula: C<sub>17</sub>H<sub>13</sub>BrO<sub>2</sub>

Molecular Weight: 329.19

Melting Point: 186-188°C

Appearance: Off white powder

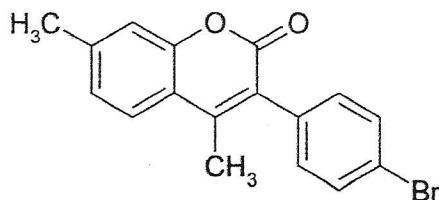
Solubility: Soluble in Chloroform

TLC: Hexane:Ethyl acetate (7:3)

NMR Spectrum: Enclosed (Confirms to the structure)

Storage: Cool dry place

Purity (HPLC): 99.44%





# INDOFINE Chemical Company, Inc.

121 Stryker Lane, Bldg. 30, Suite 1 • Hillsborough, NJ 08844 • U.S.A.

Phone: (908) 359-6778 • FAX: (908) 359-1179

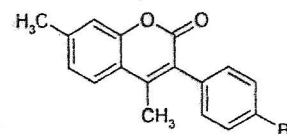
website: [www.indofinechemical.com](http://www.indofinechemical.com)

e-mail: [chemical@indofinechemical.com](mailto:chemical@indofinechemical.com)

## HPLC ANALYSIS

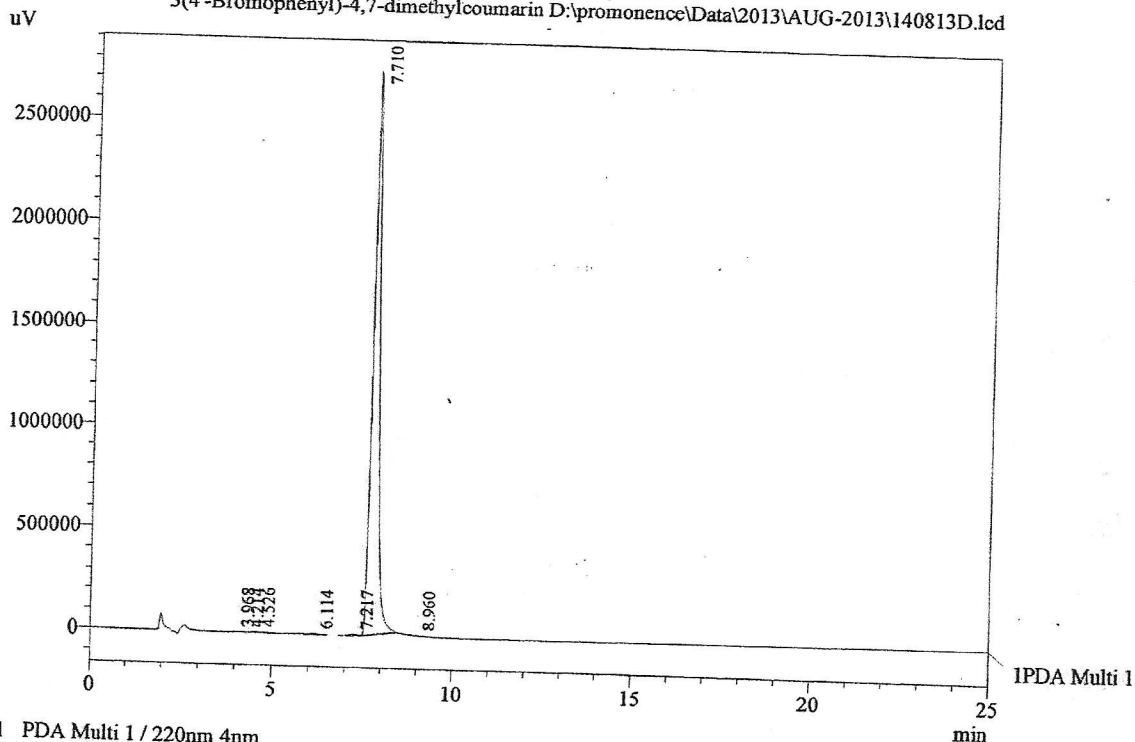
Acquired by : Sanjeev  
Sample Name : 3(4'-Bromophenyl)-4,7-dimethylcoumarin  
Sample ID : Lot No: 99277  
Injection Volume : 20 uL  
Data Filename : 140813D.lcd  
Method Filename : Linear Isocratic.M.lcm

Catalog No.: 19-219  
Product Name: 3(4'-Bromophenyl)-4,7-dimethylcoumarin  
Lot No.: 99277



Column : LUNA C-18(2), (250mm x4.6mm 5.0μ)  
Flow : 1.000 mL/min.  
Mobile Phase : A(20% of 0.05% TFA in water) B(80% of Acetonitrile)

Chromatogram  
3(4'-Bromophenyl)-4,7-dimethylcoumarin D:\promonence\Data\2013\AUG-2013\140813D.lcd

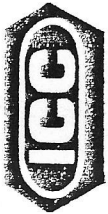


1 PDA Multi 1 / 220nm 4nm

PeakTable

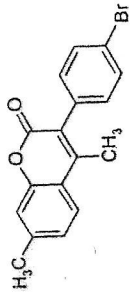
PDA Ch1 220nm 4nm

Peak#	Name	Ret. Time	Area	Area %	Relative Retention Time
1	RT:3.968	3.968	10492	0.03	0.51
2	RT:4.214	4.214	6501	0.02	0.55
3	RT:4.526	4.526	36481	0.10	0.59
4	RT:6.114	6.114	50872	0.15	0.79
5	RT:7.217	7.217	80619	0.23	0.94
6	RT:7.710	7.710	34602973	99.44	1.00
7	RT:8.960	8.960	9080	0.03	1.16
Total			34797018	100.00	



INDOFINE Chemical Company, Inc.  
121 STRYKER LANE  
BLDG. 30, SUITE 1  
HILLSBOROUGH, NJ 08844

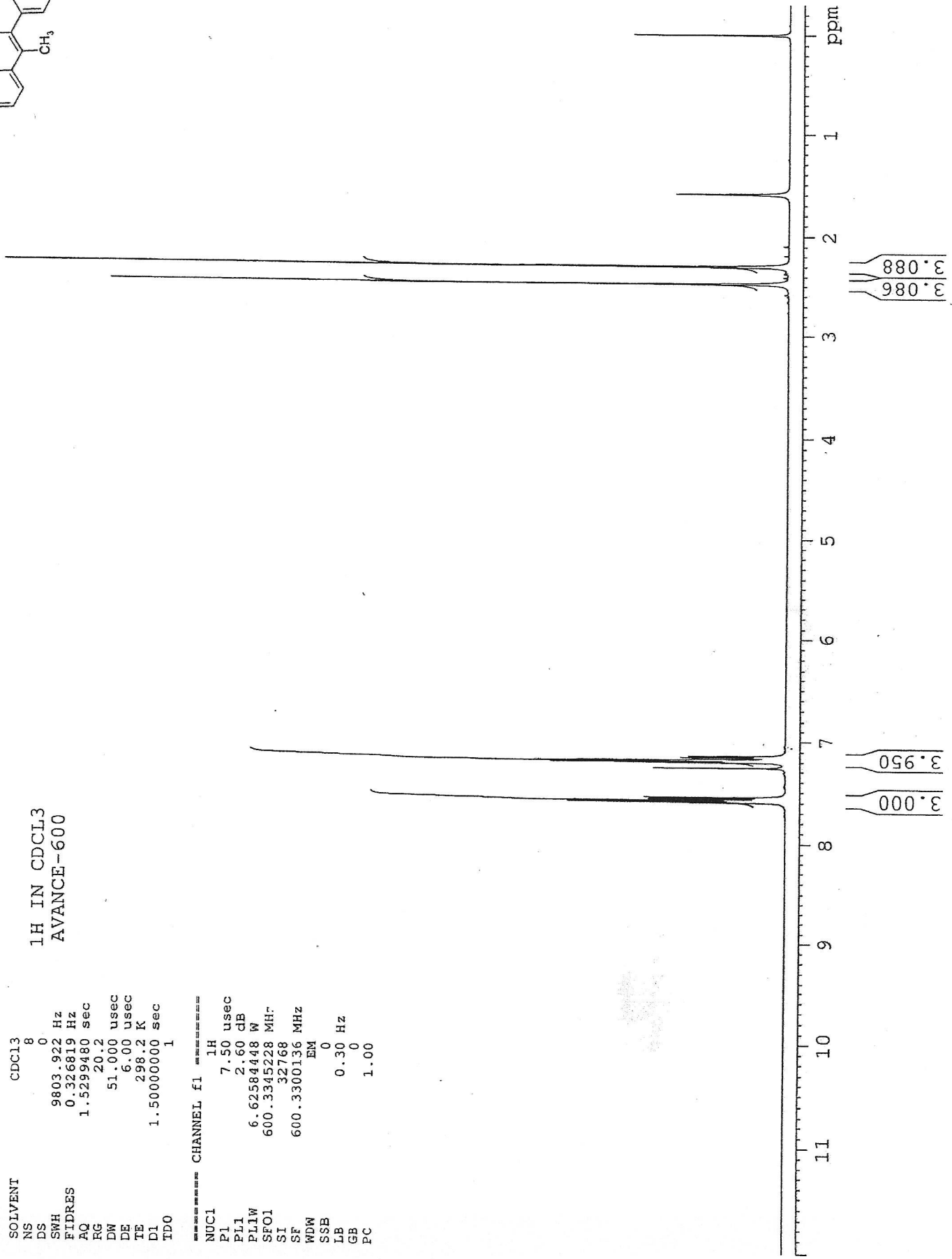
Catalog No.: 19-219  
Product Name: 3(4'-Bromophenyl)-4,7-dimethyl  
coumarin  
Lot No.: 99277



1H IN CDCL3  
AVANCE-600

SOLVENT CDCL3 8  
NS 0  
DS 0  
SWH 9803.922 Hz  
FIDRES 0.326819 Hz  
AQ 1.5299480 sec  
RG 20.2  
DW 51.000 usec  
DE 6.00 usec  
TE 298.2 K  
D1 1.5000000 sec  
TD0 1

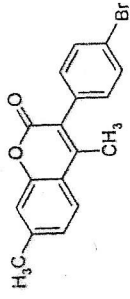
----- CHANNEL f1 -----  
NUC1 1H  
P1 7.50 usec  
PL1 2.60 dB  
PL1W 6.62584448 W  
SFO1 600.3345228 MHz  
SI 32768  
SF 600.3300136 MHz  
WDW EM  
SSB 0  
LB 0.30 Hz  
GB 0  
PC 1.00





INDOFINE Chemical Company, Inc.  
 121 STRYKER LANE  
 BLDG. 30, SUITE 1  
 HILLSBOROUGH, NJ 08844

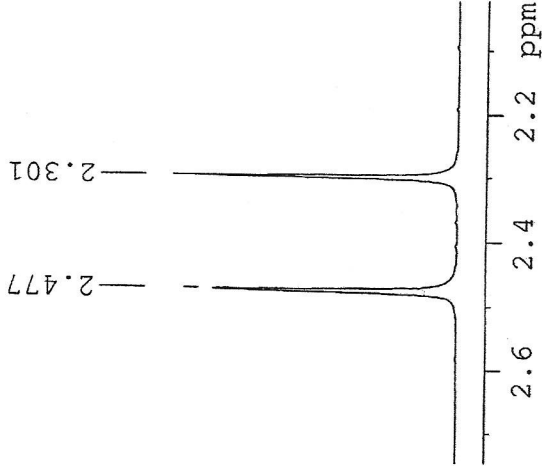
Catalog No.: 19-219  
 Product Name: 3-(4'-Bromophenyl)-4,7-dimethyl  
 coumarin  
 Lot No.: 99277



SOLVENT CDCL3  
 NS 8  
 DS 0  
 SWH 9803.922 Hz  
 FIDRES 0.326819 Hz  
 AQ 1.5299480 sec  
 RG 20.2  
 DW 51.000 usec  
 DE 6.00 usec  
 TE 298.2 K  
 D1 1.5000000 sec  
 TD0 1

1H IN CDCL3  
 AVANCE-600

===== CHANNEL f1 =====  
 NUC1 1H  
 P1 7.50 usec  
 PL1 2.60 dB  
 PL1W 6.62584448 W  
 SF01 600.3345228 MHz  
 SI 32768  
 SF 600.3300136 MHz  
 WDW EM  
 SSB 0  
 LB 0.30 Hz  
 GB 0  
 PC 1.00



7.595  
 7.581  
 7.565  
 7.551

7.264  
 7.200  
 7.186  
 7.180  
 7.157  
 7.143

